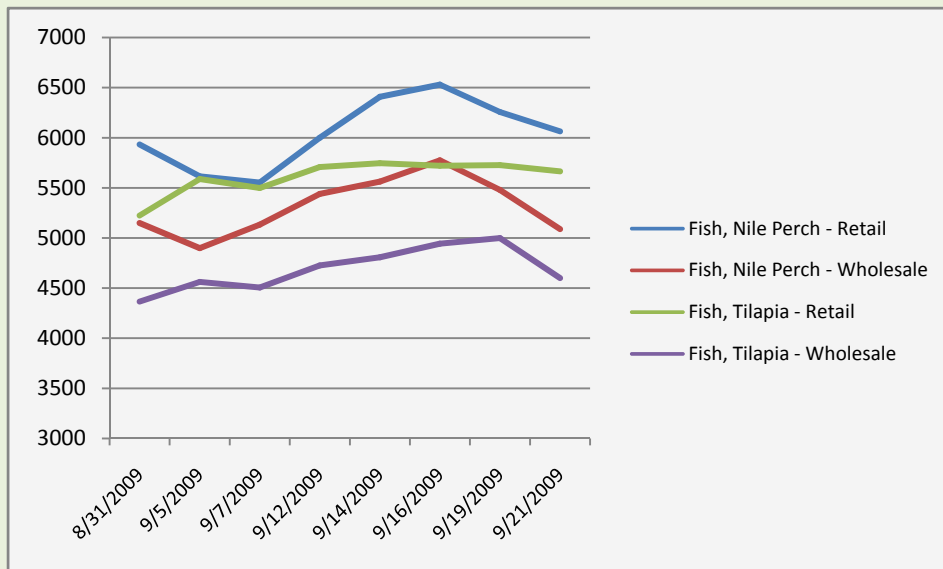


## Market Highlights

The recent EID celebrations marking the end of Ramadan subjected a number of food commodities to price hikes nation-wide for highly demanded commodities including chicken (local & exotic) and turkey. Different markets recorded variant prices depending on the demand levels therein. As such, Chicken recorded an average increase in price of shs.3000 central and shs.2000 in the East. Prices in the western and northern regions however did not register large differences. Prices for turkey showed a big increase and thus Nakasero and Mbale recorded the highest ratio where prices rose by shs.5000 and by shs.4000 in Luwero; prices in other markets were not affected that much.

### Featured Commodity



Fish prices have been on the rise for the last 2 weeks, but this week's prices show a downward trend. Uganda's fishing industry has been on a low and this has greatly affected every area of marketing including exports where volumes dropped by about 21% between 2007 and 2008.<sup>1</sup> A number of reasons have been fronted for the drop in fish prices with illicit fishing topping the list; A report from the UN Conference on Trade and Development indicated that the loss registered for fish revenue at the end of 2008 (shs.117b) was the 2<sup>nd</sup> biggest margin of loss in Uganda's history.<sup>2</sup>

Pineapples were reported to be scarce in Arua and Nakasero Markets. Thus the prices increased by shs.200 (Nakasero), shs.300 (Arua). Pineapple prices for Soroti, however, dropped.

Matooke prices are still high in a number of markets due to the continuous scarcity. The price of a medium-sized bunch ranges between shs.8000 and shs.15000 in most markets.

There is an increased supply of a certain type of rice from Tanzania in Owino market. This has forced local variety prices to reduce, so far by shs.100-shs.200.

In Gulu market millet flour prices increased by shs.100 (retail). This has been attributed to its low demand in most communities compared to prices for maize grain. Apparently, most people in this area prefer maize grain to millet grain, thus, forcing the price to fall.

Harvesting of yellow beans from Aryam district coupled with increasing supply brought about a reduction in price from shs.1880 to shs.1550 on wholesale and from shs.2000 to shs.1800 on retail price. Nakawa market registered a slight reduction in bean price. Nambale price fell by shs.100 while Yellow bean price fell by shs.200. This was because of supply of fresh beans on the market.

<sup>1</sup> <http://allafrica.com/stories/200909160722.html>

<sup>2</sup> <http://newvision.co.ug/D/9/37/695428>

			Central							Eastern					Northern				Western				
Commodity	Weight	Pricetype	Kalerwe	Kiboga	Luwero	Masaka	Nakasero	Nakawa	Owino	Iganga	Jinja	Kapchorwa	Mbale	Soroti	Arua	Gulu	Lira	Kabale	Kasese	Kisoro	Mbarara	Average	
Apple Bananas	Kg	Retail	1100	400	900	900	700	800	1100	1600	180	500	1300	550	700	900		800	600	500	1000	807	
		Wholesale	1000	300	800	600	650	500	1000	1200	150	400	1000	500	600	700		700	500	370	800	654	
Beef	Kg	Retail	5000	5000	5000	5000	5000	5000	6000	4500	6000	5000	4400	6000	5000	5000	5000	4000	4200	4000	4000	4900	
		Wholesale	4500	4500	5000	4500	4500	3800	5000	4200	5000	4500	4200	8500	5000	4800	5000	3500	4000	3500	3800	4621	
Cassava, Dry Fermented	Kg	Retail							620	530				650	725	800	1200		700		800	753	
		Wholesale							600	440				600	700	700	1000		650		700	674	
Cassava, Flour	Kg	Retail	850	1200	1200	5000	1200	1100	850	1000	1200	1000	1000	1000	850	1000	1000	1300	900	1200	1350	1274	
		Wholesale	730	1000	1000	850	900	860	730	800	1100	900	800	800	760	800	800	1100	800	800	1220	882	
Cassava, Fresh	Kg	Retail	600	400	1000	1100	650	550	600	1000	250	500	210	500	550	1000	800	1200	900	700	1000	711	
		Wholesale	550	300	1000	800	600	410	550	800	240	400	190	400	500	800	700	1000	800	500	800	597	
Cassava, Sun dried	Kg	Retail			500			1100	620	520	500		800	700	725	1000	1000		750	500	1000	747	
		Wholesale			400			860	600	420	450		700	600	700	800	800		700	400	700	625	
Cavendish (Bogoya)	Kg	Retail	1700	500	1300	1200	750	1000	1700		600	600	2000	550	700		2000		1200		2000	1187	
		Wholesale	1600	400	1100	900	700	800	1600		580	500	1500	500	600		1500		1000		1500	985	
Chicken, Exotic	bird	Retail	8000			9500	10000	6000	8000	6000	8000		6500	9000	7000	8500	5000	12000	8000	8000	9000	8031	
		Wholesale	6000			8000	8500	5000	6000	5000	7500		5500	8000	7000	7500	4000	10000	7500	6000	7000	6767	
Chicken, Local	bird	Retail	18000	15000	18000	18000	15000	13000	18000	13000	14000	10000	7500	10000	12000	13800	13000	15000	14500	10000	14000	13779	
		Wholesale	15000	13000	15000	16000	12000	12000	15000	10000	13000	8000	6000	9000	10000	12500	10000	12000	13000	9000	12000	11711	
Coffee (Unprocessed)	Kg	Retail				1000					1100									900		1000	
		Wholesale				800					1000									800		867	
Cotton (Unprocessed)	Kg	Retail								800												800	
		Wholesale								700												700	
Cow Peas	Kg	Retail	2700	1600	2000	2500	3500	1800	2700	1800	2300	1800	2000	3000	2500	1400	2000		2200	2100	1400	2183	
		Wholesale	2400	1500	1800	2300	3000	1500	2400	1600	2000	1700	1800	2800		1200	1500		2100	2000	1200	1929	
Dried Beans, Agwede	Kg	Retail			1500	1400		1400	1300	1700	1800			1400	1600		2000					1567	
		Wholesale			1400	1200		1200	1150	1500	1700			1300	1500		1400					1372	
Dried Beans, Nambale	Kg	Retail	1700		1700	1300	2000	2000	1700	1700	2200	1200	1450	1550	1600	1650	2000	1700	1600	1800	1700	1697	
		Wholesale	1600		1600	1100	1800	1800	1600	1500	2000	1000	1350	1400	1500	1400	1400	1500	1500	1500	1500	1503	
Dried Beans, Yellow	Kg	Retail	1800	1200	1700	1300	2200	2300	1500	1900	2500		1800	1600	1700	1700	2000	1600	2000	2000		1812	
		Wholesale	1550	1100	1600	1100	2000	2000	1400	1750	2400		1700	1450	1500	1600	1500	1400	1800	1600		1615	
Eggs, Exotic	tray	Retail	5000	6500	6000	6500	6000	6000	5000	6600	5200	6500	5700	7100	7500	6000	5000	7000	5800	6000	6500	6100	
		Wholesale	4500	6000	5500	4700	5800	5000	4500	5200	5000	5500	5400	5700	6000	5800	5000	5500	5500	5500	6000	5374	
Eggs, Local	tray	Retail	10000	9000	6500	9000	15000	9000	11000	8800	7500		9000	7100	7500		6500	9500	9000	10000	8000	8965	
		Wholesale	9000	7500	6000	7500	14500	7000	9000	6800	7000		7500	7000	7000		6000	8000	8500	9000	7000	7956	
Fish, Nile Perch	Kg	Retail	6000		7000	6500		7000	8000	5000	7000		5000	4500	5000	4400	8000			5500	6000	6064	
		Wholesale	5500		7000	5500		6000	7000	4000	6500		4800	4100	4500	3800	7500			4500	5500	5443	
Fish, Tilapia	whole	Retail	3500	4000	4000	4500	6000	4500	5500	6000	9000		4500	5500	8300	4680	8000	9000	4000	4500	6500	5666	
		Wholesale	3000	3500	3500	3500	5000	4000	5000	5000	8500		4000	4500		4500	7500	7500	3700	4000	6000	4865	
Goat Meat	Kg	Retail	6000	6000	6000	5000	6000	6000	5500	6000	6000	5000	5000	5000	5500	6000	6000	5000	6000	4500	5500	5579	
		Wholesale	5500	5000	6000	4500	5500	4800	4500	5000	5000	4500	4800	4800	5500	5800	5500	4800	5800	3600	5000	5047	
Groundnuts, Unpounded	Kg	Retail	3000	2400	2600	2300	3000	2600	2600	2400	2700	2300	2400	2200	3000	2500	3000	2200	2600	2600	2700	2584	
		Wholesale	2800	2200	2200	2200	2500	2300	2300	2200	2600	2200	2200	2100		2300	2500	2000	2500	2400	2600	2339	
Honey, Processed	ltr	Retail	7500	7000	3500		8000	8000		8800	4000				4000			6000		10000	6000	6618	
		Wholesale	7000	6000	3500		7500	7000		7200	3000				3600			5500		8000	5000	5755	
Honey, Unprocessed	ltr	Retail		3500	2500		5500	6500		5500	2500			6400				4500		7500		4933	
		Wholesale		3100	2200		5000	6000		4500	2000			6100				4000		6500		4378	
Irish Potatoes	Kg	Retail	750	516	1200		1000	800	600	700	800	300	600	600	1500	1400	1200	600	700	1000		839	
		Wholesale	650	500	1000		900	700	550	600	700	250	500	500		1300	1000	500	600	800		691	
Maize Flour	Kg	Retail	1500	1400	1500	1400	1800	1500	1300	1300	1200	1200	1000	1400	1600	1300	1600	1600	1200	1600	1600	1421	
		Wholesale	1400	1200	1200	1200	1500	1300	1150	1100	1000	1000	900	1300	1360	1200	1200	1400	1100	1300	1400	1222	

Commodity	Weight	Pricetype	Kalerwe	Kiboga	Luwero	Masaka	Nakasero	Nakawa	Owino	Iganga	Jinja	Kapchorwa	Mbale	Soroti	Arua	Gulu	Lira	Kabale	Kasese	Kisoro	Mbarara	Average
Maize Grain	Kg	Retail	1100	900	1000	1000	1100	1100	590	650	590	600	540	650	650	750	700	1200		600	1200	829
		Wholesale	1000	800	800	700	1000	1000	1000	580	580	580	500	520	550	600	600	600	1000		500	1100
Matooke	Kg	Retail	350	300	1000	250	850	550	400	500	260	400	1200	500	400		1200		600	700	700	598
		Wholesale	300	250	1000	225	800	500	370	400	220	300	1000	450	350		1000		550	500	600	519
Matooke (Bunch)	Bunch	Retail	8000	12000	12000	8500	15000	13000	18000	16000	13000	8000	15000	10000	9000	14000		17000	13500	11000	6000	12167
		Wholesale	7000	10000	10000	7500	12000	11000	16000	14000	11000	6000	14000	8500	8700	13000		12000	13000	7000	5000	10317
Milk	Ltrs	Retail	1200	1000	750	1200	1200	1200	1200	1000	800	550	900	800	1000	1000	800	700	800	900	1000	947
		Wholesale	1000	900	700	1000	1000	1000	1100	900	700	400	800	700	1000	800	600	600	750	650	900	816
Millet Flour	Kg	Retail	1200	1600	1300	1500	2000	2000	2000	1300	1600	1800	1700	1500	2000	1400		2000		1600	1800	1665
		Wholesale	900	1500	1200	1300	1800	1600	1600	1100	1500	1700	1600	1400	1800	1200		1800		1400	1600	1471
Millet Grain	Kg	Retail	1200	1500	1000	1400	1950	1200	1150	1050	1400	1300	1200	1000	1600	1000		1700		1250	1500	1318
		Wholesale	900	1400	800	1200	1700	1000	100	900	1300	1200	1100	900	1500	800		1600		950	1300	1097
Pineapple	whole	Retail	1200	800	1500	800	2200	2000	1400	2000	2000			1500	2300	2500		500	1400		800	1527
		Wholesale	1000	500	1200	600	1600	1700	1000	1500	1800			1400	2300	2200		450	1200		500	1189
Pork	Kg	Retail	4700		5000	4500		5000	5000		6000	4000	4000	4000	5000	4500	4000	6000	4800	4000		4700
		Wholesale	4000		4500	3500		3500	4000		5000	3600	3700	3800	5000	4300	3000	5000	4500	3000		4027
Rice (Kayiso)	Kg	Retail	2000	2800	2500	2400		2000	2300	2000	2200	2200	1900	2200	2400	2500	2400			2600	2500	2306
		Wholesale	1800	2500	2400	2000		1800	2100	1850	2000	2100	1800	2000		2200	2200			2400	2400	2103
Rice (Super)	Kg	Retail	2500	2300	2500	2300	2500	2500	2500	2400	2500	2400	2400	2400	2400	2650	2500	2500	2800	2500	2500	2476
		Wholesale	2200	2200	2400	1800	2300	2200	2200	2200	2200	2200	2300	2200	2200	2100	2400	2200	2350	2700	2400	2400
Rice (Upland)	Kg	Retail	2000	2000	2200	2300	2700	2000	2300	2000	2200	2000			2400	2500	2200	2600	1700	2300		2213
		Wholesale	1800	1800	2000	1800	2400	1800	2000	1850	2000	1800			2100	2300	2200	2400	1600	2100		1997
Simsim	Kg	Retail	3000		2700	3300	4500	3000	3000	2400	3000	2500	2400	2500	2500	2600	3000			3000	2200	2850
		Wholesale	2800		2500	2900	4000	3600	2300	2200	2800	2400	2100	2300		2400	2500			2500	2000	2620
Sorghum Flour	Kg	Retail	1000	900	1400		1800	1200	1000	950	1200	1000	650	1000	1600	1200		700	1400		850	1116
		Wholesale	700	800	1200		1500	900	800	800	1100	900	600	800	1500	1000		600	1300		500	938
Sorghum Grain	Kg	Retail	700	800	800		1600	1000	1000	750	800			520	600	1000	900		1100	800	1100	898
		Wholesale	500	700	800		1400	700	650	570	700			500	550	900	750		1000	600	1000	755
Soya Beans	Kg	Retail	2000	1400	1800	1400	1600	1800	1100	1400	1700	1800	1000		2000		1000	2700		1600	1500	1613
		Wholesale	1800	1200	1500	1300	1500	1400	800	1150	1500	1700	800				800	2500		1300	1400	1377
Sunflower	Kg	Retail							400													400
		Wholesale							370													
Sweet Potatoes	Kg	Retail	590	150	1000	1000	650	500	600			400	210	500	450	900	700	450	1000	700	900	629
		Wholesale	500	100	1000	600	600	450	550			300	200	450	400	800	500	300	800	500	700	515
Turkey	bird	Retail			35000		40000	40000	45000	35000	37000		20000	34000						29000	32000	34700
		Wholesale			30000		35000	32000	35000	33000	35000		15000	32000						26000	30000	30300
Vanilla (Unprocessed)	Kg	Retail							2700											3500	3000	3067
		Wholesale							2300											3000	2000	2433

Please note that food prices are subject to change for a number of reasons. While every effort is made to ensure accuracy FIT Uganda Ltd cannot be held responsible for any changes in actual market prices. Feedback on any point of accuracy is always welcomed.



**FIT Uganda Ltd**  
Plot 351A Balintuma Road  
Tel: 0414-532391  
infotrade@fituganda.com  
www.fituganda.com  
www.infotradeuganda.com